

7th February 2025

QEHS WEEKLY UPDATE 20

At a meeting of the Hexham Schools’ Partnership, we discussed the importance that all schools from First Schools, Middle Schools through to High School place on personal development. Through extracurricular activities, the PSHE curriculum, careers education, form time and assemblies we all aim to make sure our students have opportunities to develop character, make informed choices and develop into responsible citizens.

This week we are celebrating successes in cross country, girls’ rugby, the school musical, chess and mock trial. We also collected a huge amount of goods for the West End Refugee Centre – an initiative organised by our Human Rights Group. It is this richness of opportunity and engagement that supports the wider development of our students and is something we value and celebrate as a school. Many of our staff were also delighted to welcome back Joe Morris MP, who came to speak to our students. Whatever their political persuasion, the staff and students who met Joe were rightly proud to acknowledge how he had benefitted from and been shaped by his education at QE.



Respect

Attendance

Being in school, meeting people and doing activities helps social development and positive mental health. When we review outcomes data there is a clear correlation between attendance and performance. Students make better progress and achieve higher outcomes when they attend. In the newsletter each week I will show you our current attendance data for each year group. Our school target is 95%. We know that some students will struggle to attend school so please speak to their form tutor, Head of Year or Mrs Curry if you have any concerns. We work with families to help students overcome barriers to attending school.

Attendance week (week ending 31 January)				
Year group	Year 9	Year 10	Year 11	All years
Percentage	94.1%	91.0%	90.7%	92.5%

Queen Elizabeth High School
Whetstone Bridge Road, Hexham, NE46 3JB
T: 01434 610300 E: admin@qehs.net
www.qehs.net

Executive Headteacher: **Graeme Atkins**
Head of School: **Neil Seaton**

Engage

Human Rights group – West End Refugee Service

A huge thank you to all students, staff and parents for supporting the West End Refugee service. We sent over 25 bags of food and toiletries. Alison and Sindi from WERS gave a very interesting talk to the Human Rights group, exploring what it means to be an asylum seeker and then finished with a Q&A session. The students then helped to load up all the donations. The WERS team were absolutely delighted to receive them and said it would be a huge help in supporting their clients.



Rugby



The U16 girls' rugby team had huge success at the Prudhoe High School tournament this week.

In the first game against Prudhoe the girls dominated from the kickoff, winning 15 - 0. Tries from Charlotte A (2), Molly B (3), Abby A (3), Lucy C (3), Phoebe P (4).

The second game against Ponteland was again high scoring with tries from Phoebe P (5), Lucy C (3), Molly B, Charlotte (3) and Abby helping the team to a victory of 13-2.

Fantastic play and teamwork from all and a friendly atmosphere between all the teams!

English Schools Chess Championship

Congratulations to Harvey T, Philip B, Ben S, Isaac V, Dominic C and Ben C who have progressed to the regional final of the English Schools Chess Championship, following victory in the previous round against Ponteland High School's A team. Our team will face either Bede Academy or Royal Grammar School in the final, with the winners progressing to the national final in Nottingham in June.

Aspire

Careers opportunity for Y10 students:

We are delighted to announce a new partnership between Queen Elizabeth High School and The Lord Crewe Arms in Blanchland as part of the Hospitality Connect project.

The aim of Hospitality Connect is to introduce school students to the world of hospitality via a meaningful partnership with a local hotel or hospitality venue.

Objectives include:

- Improving awareness of the occupations available by delivering inspiring activities that will inform school students on the breadth of opportunity in the hospitality sector.
- Highlight pathways for learners aged 14 to 16+ and amplify technical education options that lead into the sector.

The project will be open to Y10 students interested in a career in hospitality. There will be up to ten places available. The project will offer the students a number of opportunities to find out about life as an employee at the hotel in a range of different departments and will culminate in a week long work experience placement in the first week of June: 2nd – 6th June.

To register your interest, please complete this short form: [Expression of Interest Form](#). If you would like further information, please email: ahedley@qehs.net

Royal Society Partnership Grant STEM lead

We are looking for a volunteer STEM lead to help develop a project at QEHS which we hope will be funded by the Royal Society. The funding comes from an offshoot of their “Partnership Grants” programme under the heading “Tomorrow’s Climate Scientists”. The STEM lead will take an active role in helping the students form a research question on an aspect of biodiversity, and help to deliver or direct the research activities. QEHS is working with Northumberland national park who will facilitate access to the Hadrian’s Wall Wetlands Landscape Recovery project area to develop this idea. Although we can have multiple STEM advisors, the STEM lead has a specific role which is integral to the grant application including signing off the project proposal, assuring the Royal Society that the scientific method is embedded. For more [information](#), please have a look on our website.

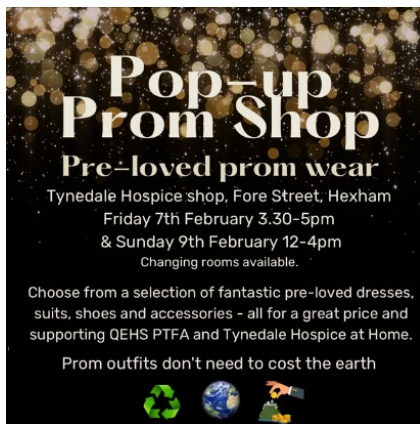
Career of the week

This week's Career of the Week was: [Chef](#)

Further information, including a short video, can be found on [Unifrog](#): <https://www.unifrog.org/student/careers/direct/chef>

This includes Labour Market Information (LMI). It is important both parents and students are aware of this as it includes current and predicted figures relating to the profession, particular attention should be paid to the expected growth figure. All students have received a ‘Welcome’ email to their school email account. Please encourage them to activate their account if they haven’t already done so. We also have a ‘dummy’ code for parents. Use ‘QEHHparent’ on this page: [unifrog.org/code](https://www.unifrog.org/code).

QEHS Parent Teacher & Friends Association news



The QEHS PTFA and Tynedale Hospice at Home are hosting a Prom pop-up shop today (Friday) 3.30-5pm and Sunday 12-4pm at the Tynedale Hospice Shop, Fore Street, Hexham, where you can find a selection of pre-loved outfits, including menswear, at a fraction of the cost of buying new!"

PTFA Lottery

Tickets for the lottery are £1 per entry with 2 monthly cash prizes. Entry is simple and online. More information and the online application can be found

[here](#) or email gehsprizedraw@gmail.com.



Sixth Form

Sixth form option meetings

The sixth form options meetings for our current year 11 students run until 21 February. Any student considering our sixth form will require a meeting. Parents can make the appointment via the MCAS app or by telephoning 01434 610312.

Select the following link to view the [sixth form options booklet](#).

Work experience week

Year 12 students undertake a compulsory week of work experience to give a greater understanding of the world of work in their chosen area and help build links for future employment opportunities. The school will help where possible, but ultimately it is down to students themselves to organise their placement. Work experience week takes place from Monday 9 June to Friday 13 June.

Students who haven't already found a placement are encouraged to use:

<https://www.unifrog.org/placement/guides>.

Sixth form noticeboard

Opportunities and advice for employment, volunteering and university are regularly promoted via the website, within the [Sixth Form Noticeboard](#).

We rely on parents 'feeding' opportunities into the students, so if an organisation you are involved with is doing something in the future that a young person may find inspiring, please email sixthform@gehs.net. Equally, if you would like to advertise local job opportunities (paid or voluntary) please send the details.

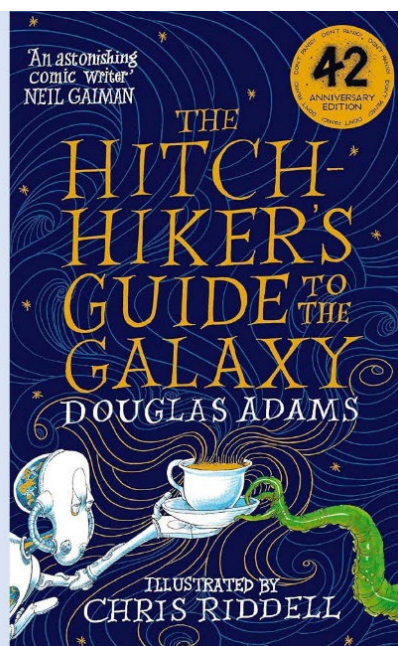
LRC Recommended Read

This week's recommended read is the classic novel 'The hitchhiker's guide to the galaxy' by Douglas Adams.

It's an ordinary Thursday lunchtime for Arthur Dent until his house gets demolished. The Earth follows shortly afterwards to make way for a new hyperspace bypass and his best friend has just announced that he's an alien.

At this moment, they're hurtling through space with nothing but their towels and an innocuous-looking book inscribed with the big, friendly words: DON'T PANIC.

The weekend has only just begun...



Online Safety Update

What is Kick Streaming?

Many parents will be aware of Twitch, especially if their children are gamers. Owned by Amazon it has become incredibly popular over the years for children to either watch live streams or to live stream themselves. But in the past there's been plenty of controversy about the platform, particularly in relation to restrictions that imposed upon streamers. So it's no surprise to see other platforms becoming more popular and one of those platforms is Kick (not to be confused with Kik Messenger).

It was launched in 2022, users should be 13+ and it follows the same process as Twitch where live streamers can make money. However, much of the content on Kick is adult in nature.

Internet Matters has a good article about Kick and it may be useful to share this with your parents. You can find the article [HERE](#).

News from the community

Windowful

Windowful is an exciting new community project led by Queen's Hall Arts, taking place at the end of half term. They are inviting people who live or work in Hexham to decorate their windows to create a magical walking trail across town on **Friday 28 February & Saturday 1 March, 6 – 9pm.**

[More information and some handing hints on getting started can be found online here.](#)

Free School Meals

If you feel that your child may be eligible for free school meals, please have a read of the criteria and make an application as soon as you can. You can find out more [here](#). To apply, please [complete this form](#) via Northumberland County Council.

Reminders/ Key Dates

Date	Event	Who
Friday 7 February	Prom pop-up shop	Year 11 (all welcome)
Sunday 9 February	Prom pop-up shop	Year 11 (all welcome)
Monday 10 February to Friday 14 February	Barcelona residential - Art	Year 12 (group)
Friday 14 February and Monday 17 February	Centre for Life – Biology	Year 13
Friday 21 February	Teacher training day	All year groups
Monday 24 February – Friday 28 February	Spring Half term holiday	All year groups

Yours faithfully



Neil Seaton
Head of School

Pupil support and safeguarding

Designated Safeguarding Leader: Mrs Hattie Curry

Deputy Safeguarding Leaders: Mr Emerson Brown, Mr Alex Robson & Mrs Jill Wood.

SENDCo: Mrs Jill Wood

Please remember that we are here to support you and your child at any time. You can contact us via the main office (phone) or by email admin@qehs.net

For queries regarding attendance or absence, please email attendance@qehs.net